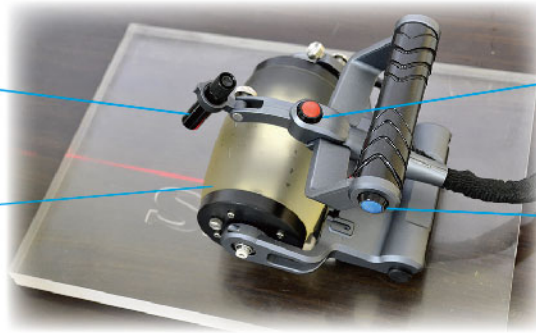


Crawler with PA Wheel Probe

WPS-01

Crawler WPS-01 with PA wheel probe is especially good for testing corrosion on composite materials. Suitable for circumferential scanning on pipe OD $\geq 200\text{mm}$ (7.88 inch), longitudinal scanning on pipe OD $\geq 100\text{mm}$ (3.94 inch) and flat plate.

- **Laser for Centerline**
- **Transparent Tire:**
Help to check the bubbles visually.
(Length 128mm, Max. OD 86mm)
- **Start/Stop Button:**
Start or stop scanning.
- **Acquisition Button:**
To start or stop data acquisition.



C-Scan on plate engraved with SIUI logo

Superior Features

- Easy operation, C-Scan can be achieved easily with simple coupling.
- With different probes to achieve high resolution and strong penetration.
- Easy quantitative analysis of lamination and porosity for composite plates.
- 28 mm water delay line enables inspection of composites up to 56 mm thick.

Recommended Accessories

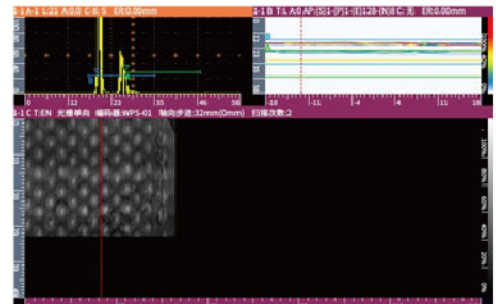
WPS-01	
PA Wheel Probe	5/7.5/10Mhz, 64 elements probe
Manual Irrigation Device IH-04	1.25L; Manually pressurized, with adjustable flow valve

PA Wheel Probes

Probe Model	Frequency	Elements No.	Pitch	Passive Aperture	Array Width
	MHz		mm	mm	mm
5.0L64-1.3-8-W28	5	64	1.3	8	83.2
5.0L64-1.3-10-W28	5	64	1.3	10	83.2
5.0L64-0.8-8-W28	5	64	0.8	8	51.2
7.5L64-0.5-8-W28	7.5	64	0.5	8	32
7.5L64-0.8-8-W28	7.5	64	0.8	8	51.2
10.0L64-0.5-8-W28	10	64	0.5	8	32

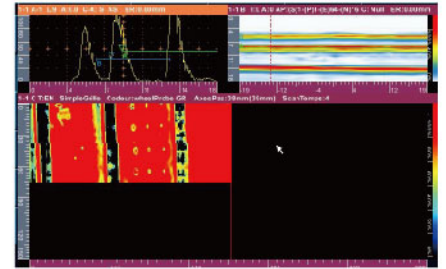
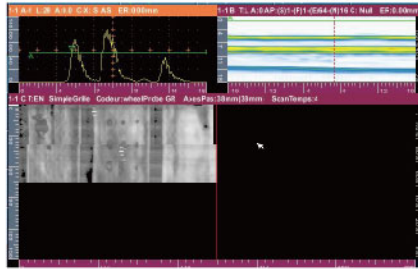
Application

- PA bond testing on honeycomb core aluminum plate

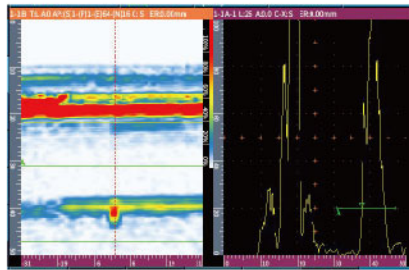


Crawler with PA Wheel Probe

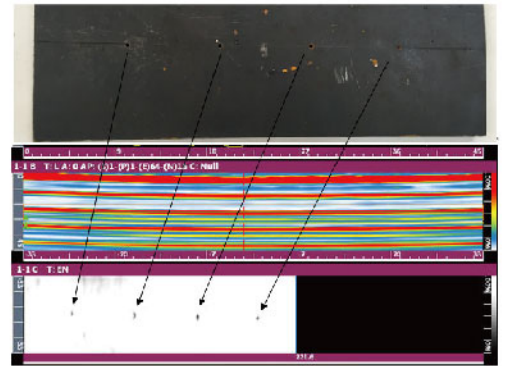
● Composite delamination inspection



● Testing $\Phi 0.8\text{mm}$ hole on aluminum plate



● Testing $\Phi 2$ flat bottom holes with different depth



Technical Specification

WPS-01	
IP Code	IP54
Dimension (W×H×L)	165 × 134 × 185 (mm)
Weight	1.5kg
Scan Method	Manual, single axis scanning
Encoder Precision	23.3step/mm
Encoder Cable	SIUI-A14P-C4J-C4P-3M-A
Suitable Tested Workpiece	Circumferential scanning on pipe OD $\geq 200\text{mm}$ (7.88 inch), longitudinal scanning on pipe OD $\geq 100\text{mm}$ (3.94 inch) and plate
Operation Temperature	0°C ~ 40°C
Storage Temperature	-20°C ~ 60°C



SIUI

Shantou Institute of Ultrasonic Instruments Co., Ltd.

Add: #77, Jinsha Road, Shantou 515041, Guangdong, China

Tel: +86-754-88250150 Fax: +86-754-88251499

E-mail: siui@siui.com Website: <http://www.siui.com>

