



- Good Coupling
- Easy Operation
- Magnetic Wheels
- Spring Arm Structure
- Multiple Combinations

PTS-P05

Easy-to-Use, Reliable, Portable

—New Generation Phased Array & TOFD Crawler

The Phased Array and TOFD crawler PTS-P05 is compatible with PA or TOFD ultrasonic flaw detector. It is suitable for phased array or TOFD testing on plates and pipe workpieces.

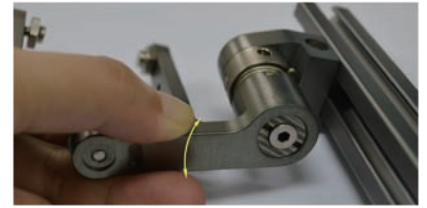
- ⊕ The magnetic wheels can be attracted to the tested work pieces for easy operation.
- ⊕ Spring arm structure, which follows the tested surface, maintaining good coupling between the wedge and the tested work piece.
- ⊕ The probe fixed arm spacing is adjustable, which can be installed with wedges of various specifications to meet specific needs.
- ⊕ The position of the probe holder can be adjusted to the actual testing needs, convenient and flexible.



Long probe holder arm and short probe holder arm



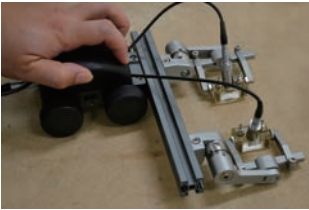
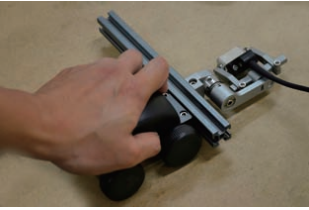

Long beam and short beam



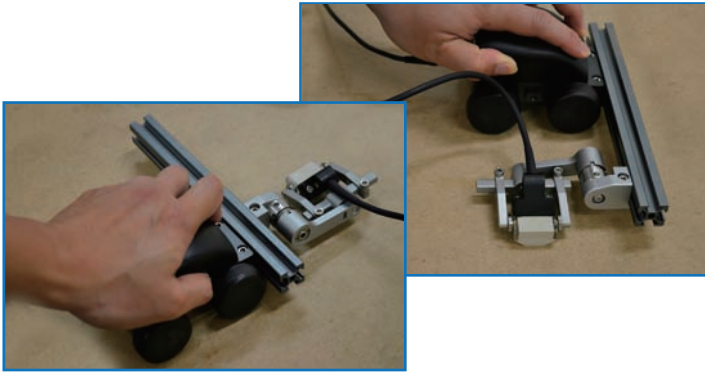
Turning Arm Adjustment

Superior Features

The Phased Array and TOFD crawler PTS-P05 has up to three combinations to meet different application requirements.

PTS-P05 Crawler Combinations	
Combination 1 (1-channel TOFD)	
	<p>Work with one pair of TOFD probes for TOFD testing on plate with wall thickness less than 50mm.</p> <p>*Support irrigation wedges and non-irrigation wedges.</p>
Combination 2 (One PAUT Probe)	
	<p>Work with one PAUT probe for phased array testing on girth weld of pipe (diameter larger than 60mm, length larger than 150mm).</p> <p>*Support irrigation wedges and non-irrigation wedges.</p>
Combination 3 (Two PAUT Probes)	
	<p>Work with two PAUT probes for phased array testing on plate with wall thickness less than 50mm.</p> <p>*Support irrigation wedges and non-irrigation wedges.</p>

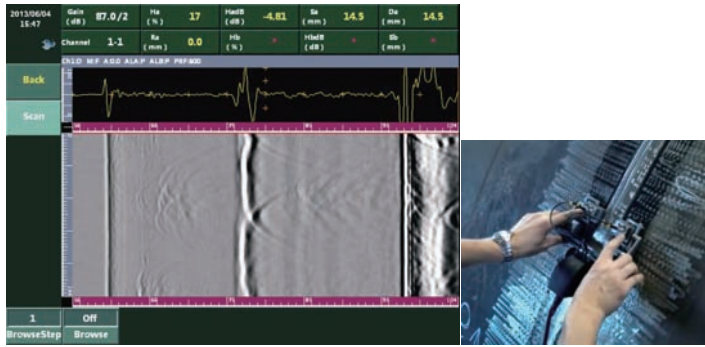
Superior Features



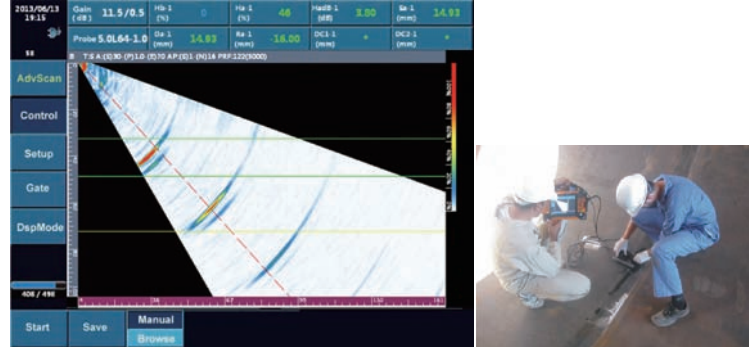
Probe holder can be installed in both side of crawler beam to achieve flexible scanning direction.



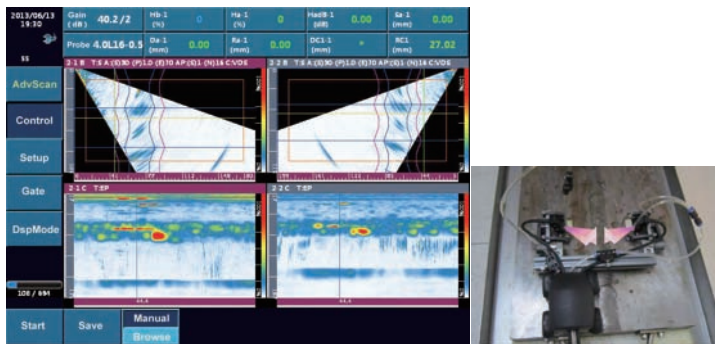
Build-in encoder: compact size and water-proof



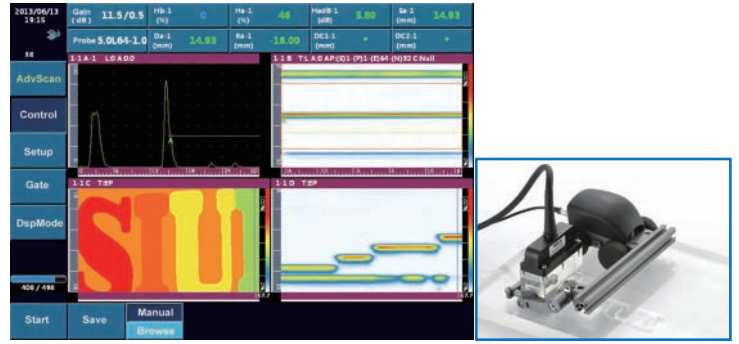
PTS-P05 crawler is working with 1-ch TOFD probes to achieve TOFD inspection on 48mm thick vessel.



PTS-P05 crawler is working with one PAUT probe to achieve phased array inspection on weld.



PTS-P05 crawler is working with two phased array probes to achieve multi-group scanning function to inspect from both sides of the weld, therefore enhancing the inspection efficiency and speed.



PTS-P05 crawler is working with one large-size linear array probe to achieve linear scan on flat panel engraved with SIUI logo.

Technical Parameters



Item	Description	
Weight	1kg	
Dimension(W×H×D)	200mm×73mm×120mm	
Packing Dimension(W×H×D)	440mm×185mm×340mm	
Scan Method	Manual, single axis scanning	
Encoder Connector Type	4-core	
Encoder Precision	2.4 step/mm	
Encoder IP Code	IP66	
Suitable Tested Work Piece	Plate (1-ch TOFD and 2 PA)	
	Pipe (1 PA)	Diameter > 60mm (2.5")
		Length > 150mm (6")

Standard Accessories

Probe Holder	Left probe holder HML-01
Probe Holder Arm	Long probe holder arm AB-02
Beam	200mm short beam

Optional Accessories

Probe Holder	Right probe holder HMR-01
Probe Holder Arm	Short probe holder arm AB-01
Beam	250mm long beam

Auto Irrigation Device	IA-01	
Manual Irrigation Device	IH-01	

SIUI

Shantou Institute of Ultrasonic Instruments Co., Ltd.

Add: #77, Jinsha Road, Shantou 515041, Guangdong, China
 Tel: +86-754-88250150 Fax: +86-754-88251499
 E-mail: siui@siui.com Website: <http://www.siui.com>