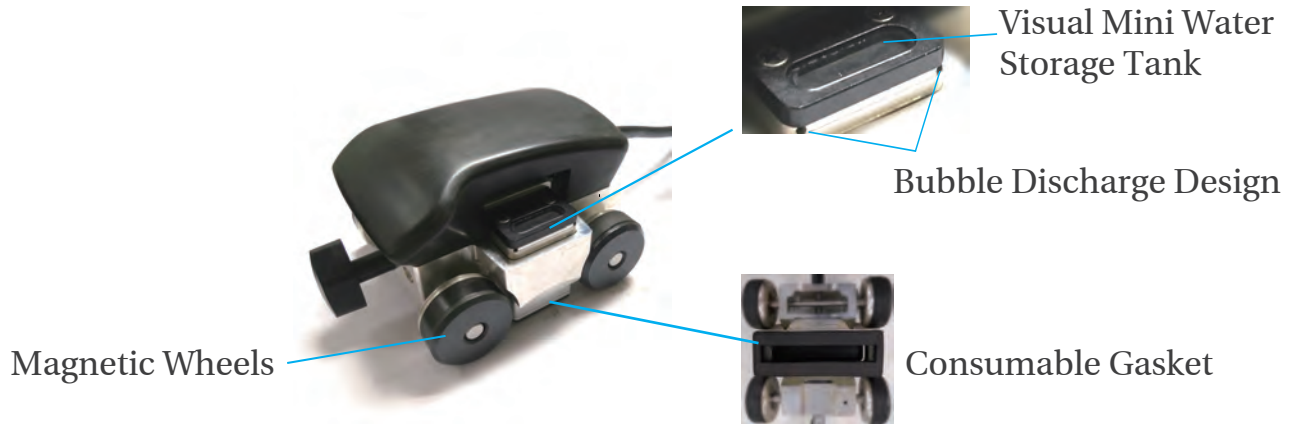


## MPS-01A

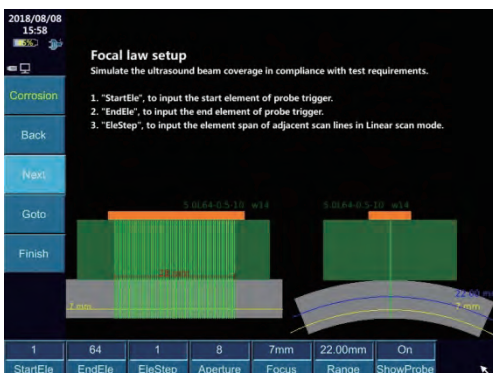


The MPS-01A is specially used for Phased Array Inspection on Corrosion. It is suitable for phased array immersion testing on pipeline.

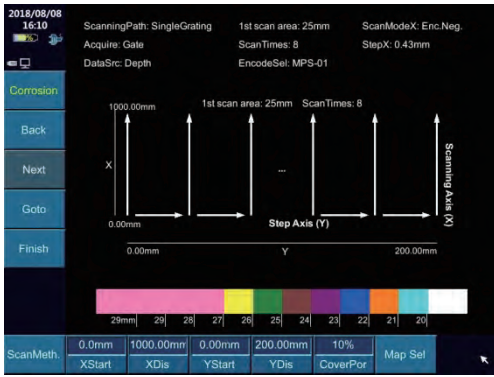
### Superior Features

- ⊕ Mouse shape design for easy control; small size and portable.
- ⊕ Mini water storage tank for immersion testing.
- ⊕ Wide coverage of sound beams to improve testing efficiency.
- ⊕ Reasonable bubble discharge design so that the coupling is not affected even by a few bubbles.
- ⊕ Consumable gasket fits tightly to the surface of the workpiece.
- ⊕ Irrigation of controlled water flow to adapt to good coupling of rough workpiece surfaces.
- ⊕ Attraction of strong magnetic wheels to the workpiece for stable operation.
- ⊕ Structure for easy disassembly, assembly and maintenance.

### Data Acquisition Software



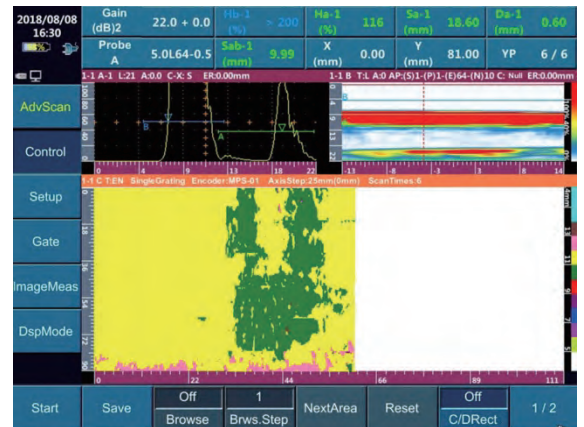
- Professional testing process wizard, allowing users to quickly get familiar with the testing process and perform quick setup and calibration.
- Workpiece simulation and simulating detection coverage for adjusting the detection process.
- Scanning strategy interface for the operator to understand the scanning plan of the entire workpiece before the scan.



- Tracking gate synchronized with interface wave that monitors minimum wall thickness and high-density C-scan.
- Custom color bar according to user's needs, with wall thickness of test results in different colors.
- Permanent storage of scanned data and online report generation.

## On-site Application

- Based on PA C-scan, the shape of the inner wall corrosion is simulated in the intuitive scan result with scattered spot corrosion being captured.





- C-scan image on curved panel with SIUI logo



## Technical Parameters

Item	Description	
Weight	1.8kg	
Dimension(W×H×D)	140×110×80(mm)	
Packing Dimension(W×H×D)	440×340×190(mm)	
Scan Method	Manual, single axis scanning	
Maximum Beam Coverage	60mm	
Scanning Speed	100mm/s	
Acquisition Resolution	1×1 (mm)	
Encoder Connector Type	4-core	
Encoder Precision	0.12 mm/steps	
Encoder IP Code	IP68	
Suitable Tested Work Piece	Plate	
	Pipe	Outside Diameter ≥100mm
Working Condition	Temperature	0℃~+40℃

## Configuration

Optional Probe and Accessories		
SIUI Immersion Linear Array Probe	7.5L64-1.0-7-IH	
	7.5L128-0.5-7-IH	
Auto Irrigation Device	IA-01	
Manual Irrigation Device	IH-05	

# SIUI

Shantou Institute of Ultrasonic Instruments Co., Ltd.

Add: #77, Jinsha Road, Shantou 515041, Guangdong, China

Tel: +86-754-88250150 Fax: +86-754-88251499

E-mail: siui@siui.com Website: <http://www.siui.com>



Specifications and appearance are subject to change without prior notice.  
DCY2.781.EN.MPS-01A. CY/9A01