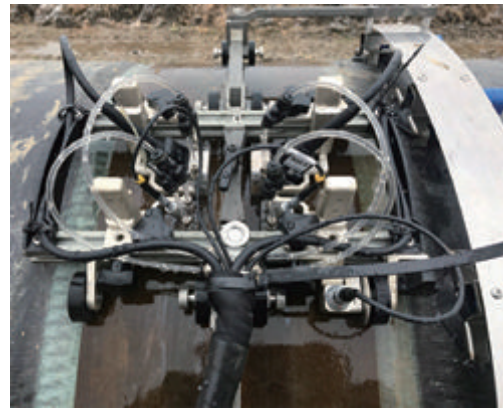


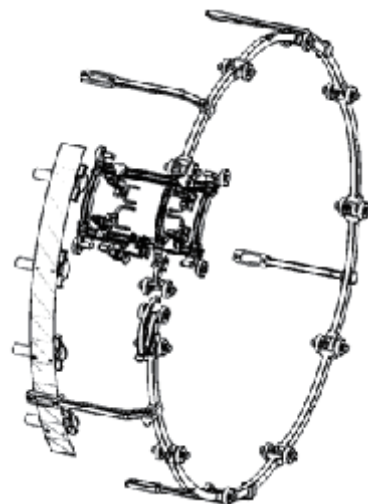
CPS-01



- ⚙ The CPS-01 is designed to work with SyncScan 2 to perform circumferential weld inspection on long-distance pipeline(OD 1000-1300mm).
- ⚙ Dual-side phased array inspection and PAUT+TOFD inspection for selection.

Superior Features

- Adaptable to welds of long-distance oil and gas pipeline with thickness 12mm-40mm.
- Chain plus magnetic guide design, 4 probes (2 PA probes and 2 TOFD probes) can be driven simultaneously for testing, single-side and double-side scanning of welds.
- Crawler chain links contact pipeline through high elastic rubber wheels, so as to achieve stable smooth probe moving and improve scanning stability.
- Manual or automatic water irrigation device, maintaining uniform water output and improving coupling stability.



Automatic module AUS-01

The AUS-01 is designed to work with crawler CPS-01 to perform automatic scanning on pipeline.

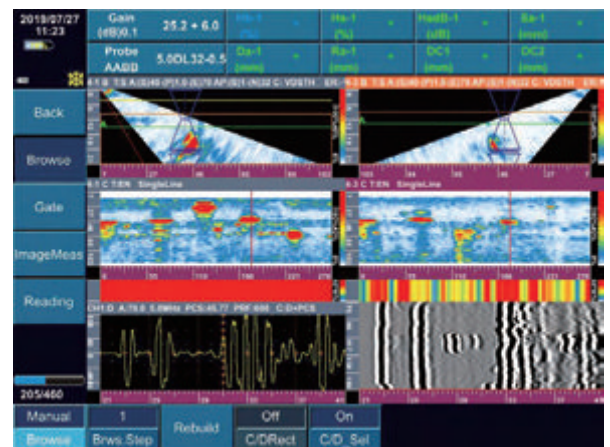
- Safety: Emergency stop switch and battery indicator.
- Easy to use: It is operated by simple button remote control.
- Variable speeds: 7 different scan speeds from 1m/min~3.5m/min.
- Ingress Protection Rating: IP67.



On-site Application



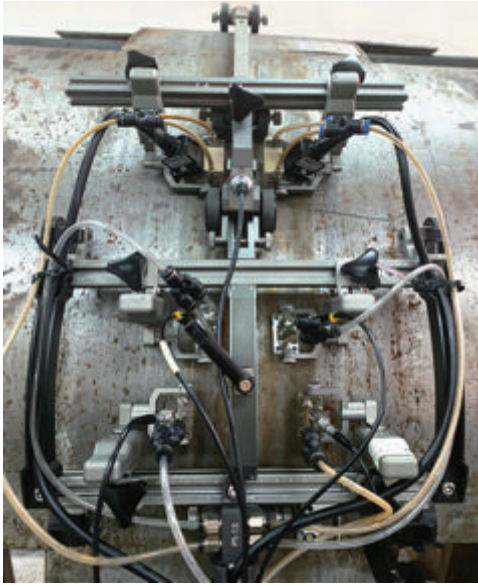
- Crawler CPS-01 for long-distance oil and gas pipeline.



- Crawler CPS-01 with AUS-01 for automatic scanning.

- Test Result.

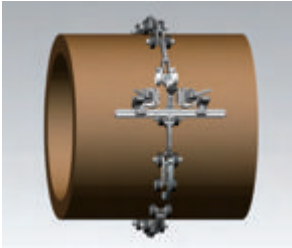
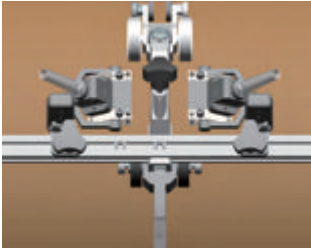



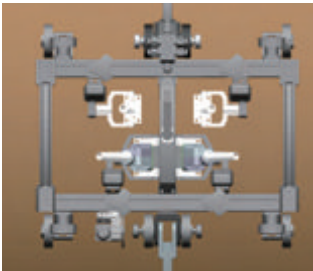
CPS-02



Superior Features

- CPS-02 is designed to work with SyncScan 2 to perform circumferential weld inspection on medium and big diameter pipes(OD 100-1000mm).
- Support up to six probes, achieving PAUT+TOFD and dual-side inspection on big pipes.
- Three types of chain links, flexible buckle design, enabling the crawler have better coupling stability.
- High-strength aluminum alloy material, strong and lightweight.

CPS-02 Series

CPS-02 (Phased Array)		
		Work with 2 PA probes for PA testing on pipe with diameter large than 100mm.
CPS-02A (Phased Array +2-channel TOFD)		
		Work with 2/4 PA probes and 2 pairs of TOFD probes for PA and TOFD testing on pipe with diameter large than 100mm.
CPS-02B (Phased Array +1-channel TOFD)		
		Work with 2 PA probes and 1 pair of TOFD probes for PA and TOFD testing on pipe with diameter large than 300mm.

On-site Application

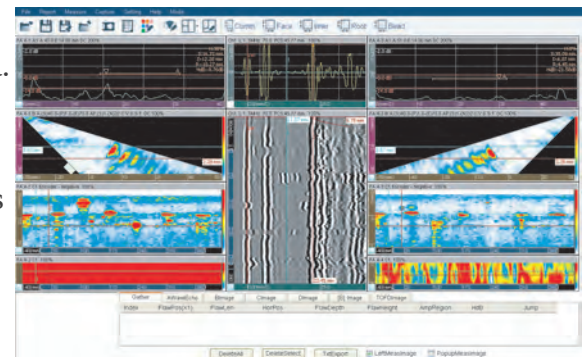
- With its flexible buckle design, just easily buckle up and unbuckle the links for different pipe diameters.



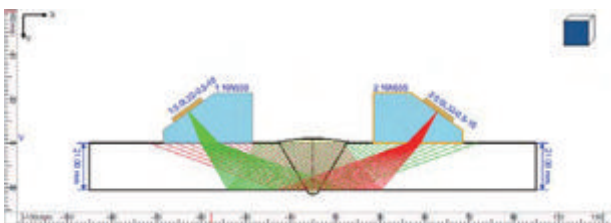
Data Analysis Software

- SuporUp, can analyze and measure acquired PA and TOFD data.

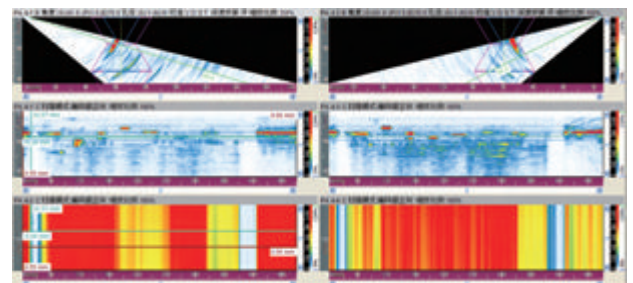
Rich management, measurement and analysis functions in the software are available for data playback of A, B, C, D scans and TOFD data, digital gain adjustment, imaging mode switch and multi-gate measurement, etc.



Based on the measured results, a test report is generated automatically by one-press.



- Beam Coverage Simulation



- Coupling Monitoring

Technical Parameters

● Crawler CPS-01



Item	Description
Weight	10.5kg
Dimension(W×H×D)	30×10×445mm
Probe Holding Capacity	PA Probe(2 pcs) TOFD Probe(1 pair)
Scan Method	Manual/ Automatic(with AUS-01)
Encoder Connector Type	4-core
Encoder Precision	0.12mm/steps
Encoder IP Code	IP68
Suitable Tested Work Piece	Pipe(Outside Diameter)
	1000~1300mm
Working Condition (Temperature)	-20℃ ~+45℃

● Crawler CPS-02

Item	Description		
Series	CPS-02	CPS-02A	CPS-02B
Weight	8kg	10.5kg	9.5kg
Dimension(W×H×D)	30×10×345mm	30×13.5×375mm	30×13.5×350mm
Probe Holding Capacity	PA Probe(2 pcs)	PA Probe(4 pcs) TOFD Probe(2 pairs)	PA Probe(2 pcs) TOFD Probe(1 pair)
Suitable Tested Work Piece	Pipe(Outside Diameter)		
	100~1000mm	100~1000mm	300~1000mm
Scan Method	Manual		
Encoder Connector Type	4-core		
Encoder Precision	0.12mm/steps		
Encoder IP Code	IP68		
Working Condition (Temperature)	-20℃ ~+45℃		

Note: SIUI can provide Crawler CPS-01/02 with different connectors compatible with PA/TOFD equipments from other manufacturers.

Technical Parameters

Optional Accessories		
Manual Irrigation Device	IH-05 (Capacity: 5L)	
Auto Irrigation Device	IA-02 (Capacity: 18L)	

SIUI

Shantou Institute of Ultrasonic Instruments Co., Ltd.

Add: #77, Jinsha Road, Shantou 515041, Guangdong, China

Tel: +86-754-88250150 Fax: +86-754-88251499

E-mail: siui@siui.com Website: <http://www.siui.com>

Specifications and appearance are subject to change without prior notice.
DCY2.781.EN.CPS-0102.CY/6A01