

Normal Probe



Wide Frequency Bandwidth Series (Composite Materials)

High signal-to-noise in composite materials, Short pulse
Wide Bandwidth — typical -6dB bandwidth range 60%~120%

Ordering Information:

K-M1-19L

Series Code

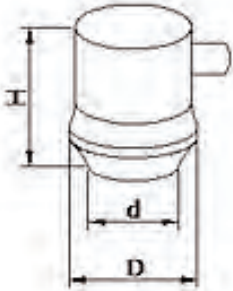
Frequency

Connector Type

Crystal dimension $\Phi 19$

Application:

Mainly used for testing defects parallel to or slightly tilted against the test surface (e.g. steel plate)



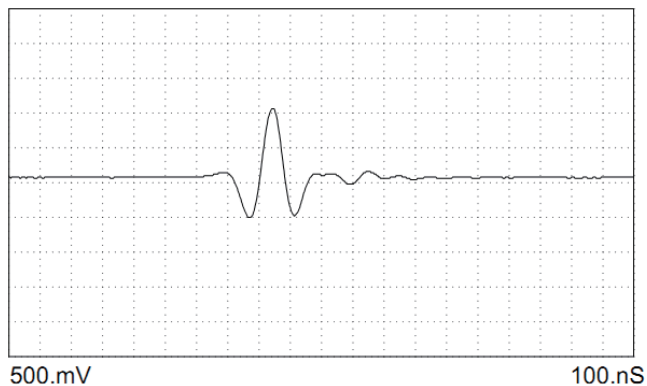
Series Code	Crystal Size (mm)	D	d	H
K-M	$\Phi 6$	$\Phi 20$	$\Phi 9.2$	25
	$\Phi 10$	$\Phi 20$	$\Phi 13.2$	25
	$\Phi 13/\Phi 14$	$\Phi 37.6$	$\Phi 17.4$	47
	$\Phi 19/\Phi 20$	$\Phi 37.6$	$\Phi 23.4$	47
	$\Phi 24$	$\Phi 45$	$\Phi 27.6$	54

Series Code	Frequency (MHz)	Crystal Size (mm)	Connector Type
K-M	1	$\Phi 19, \Phi 20, \Phi 24$	Blank: BNC/ L: LEMO 00/ L1: LEMO 01/ MD: Microdot
	2	$\Phi 13, \Phi 14, \Phi 20, \Phi 24$	
	2.25/2.5	$\Phi 10, \Phi 13, \Phi 14, \Phi 20$	
	4/5	$\Phi 6, \Phi 10, \Phi 13, \Phi 14$	

*LEMO 01 is only available for those crystal size ≥ 24 mm.

*Probes with crystal size 6mm are only compatible with LEMO 00 and Microdot.

Waveform Diagram



Spectrum Diagram

